

December 6, 2018 - Special Board Meeting



Board Item 4A

Discussion to Reconsider
Student Attendance Assignments for
Pacific Highlands Ranch

PURPOSE AND OUTCOMES

Purpose for Today:

Continue to engage in a discussion about student housing decisions regarding Pacific Highlands Ranch attendance areas.

Outcomes for Today:

To reconsider the following:

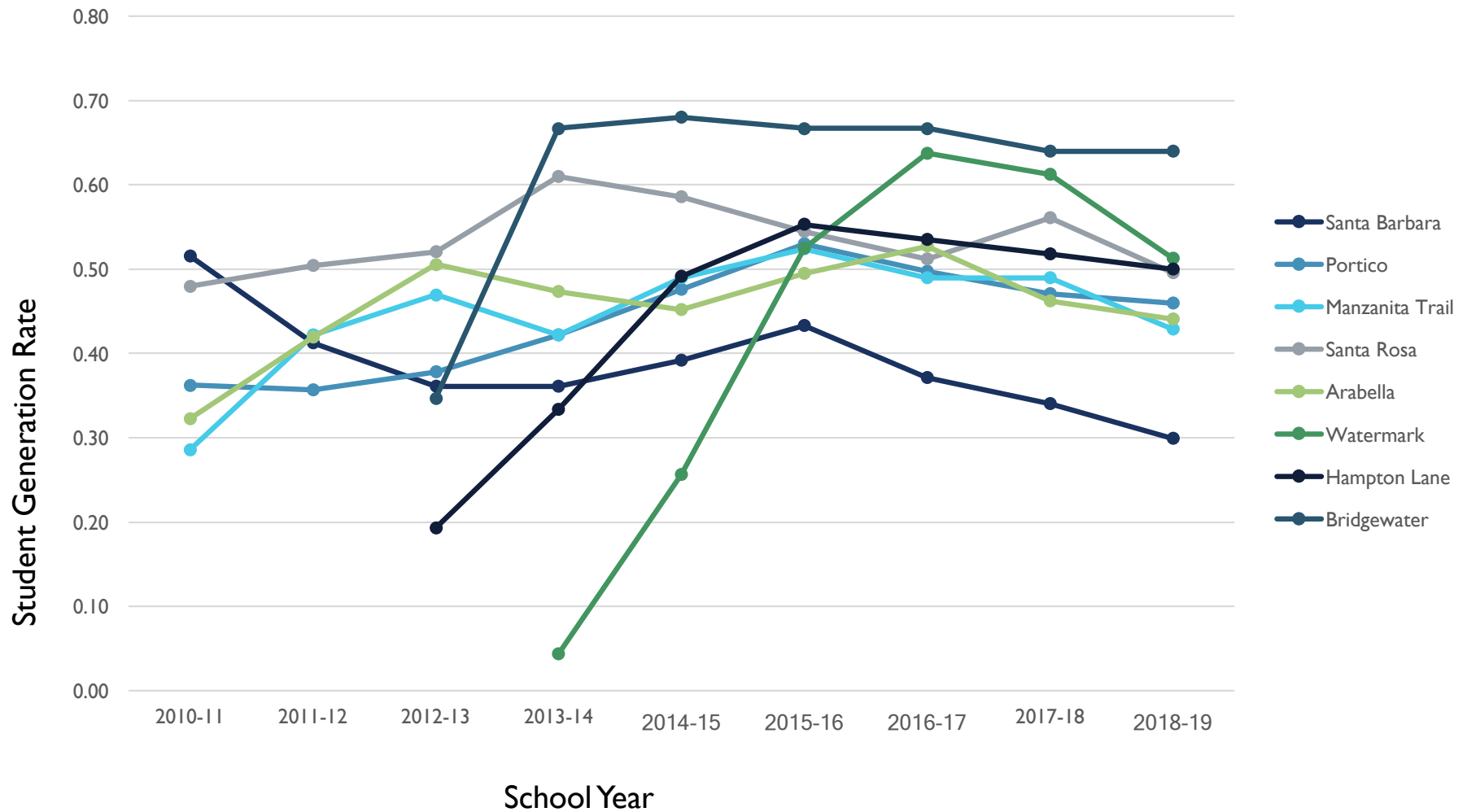
- I. Attendance recommendations previously decided for students residing in Sendero #8A and Santa Barbara #1 Housing Developments

AGENDA

1. Review input and direction given to staff from the October 11, 2018, regularly scheduled Board meeting.
2. Provide additional information requested from the November 8, 2018, regularly scheduled Board meeting.

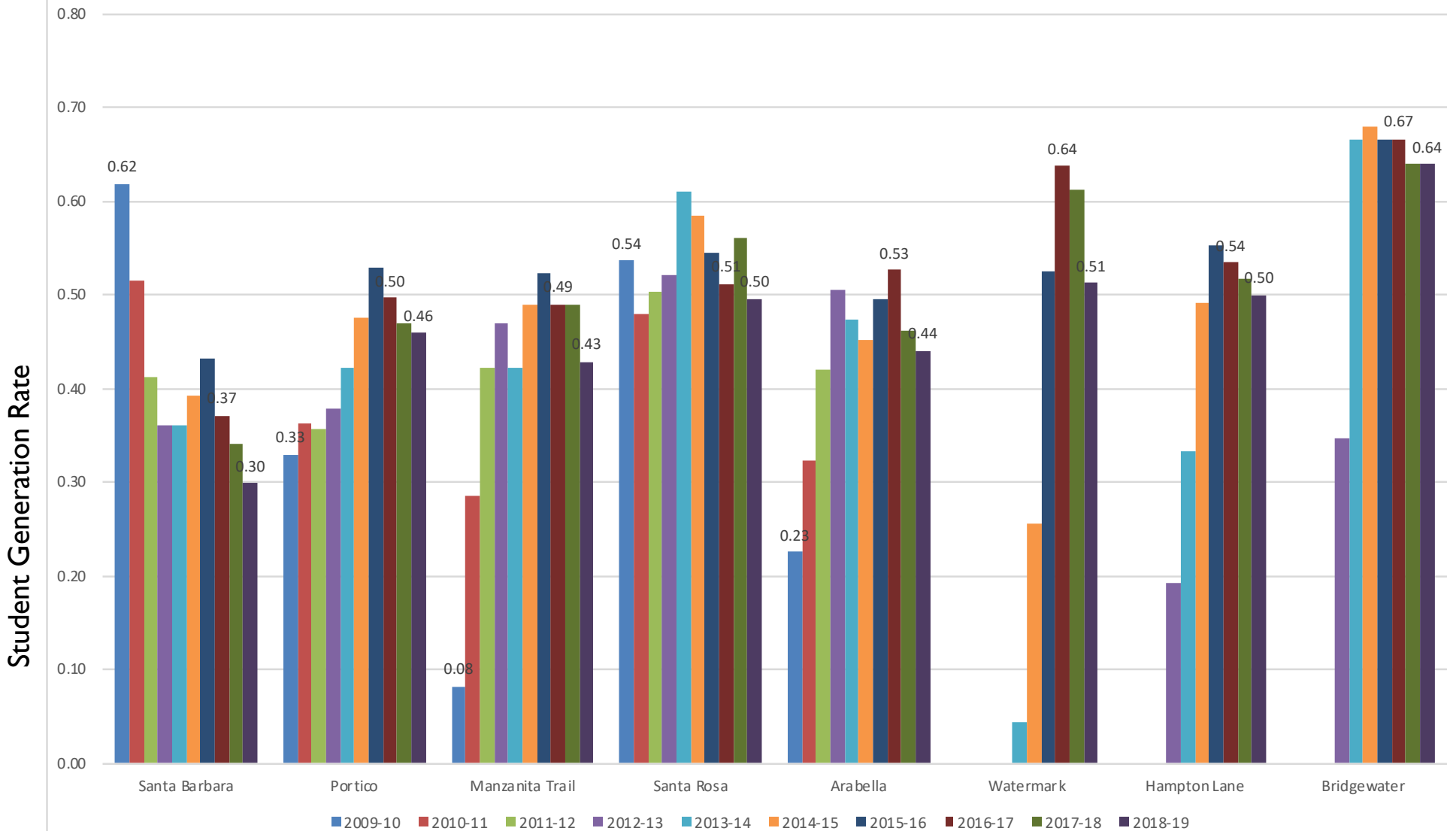
PHR HISTORICAL STUDENT GENERATION RATES

PHR Single Family Units Constructed Through 2015, Student Enrollment Through 2018-19



PHR HISTORICAL STUDENT GENERATION RATES

PHR Single Family Units Constructed Through 2015, Student Enrollment Through 2018-19



PHR HISTORICAL STUDENT GENERATION RATES

Dev't #	Dev't Name	2009-10	2010-11	2011-12	2012-13	2013-14	2014-15	2015-16	2016-17	2017-18	2018-19
PHR1	Santa Barbara	0.62	0.52	0.41	0.36	0.36	0.39	0.43	0.37	0.34	0.30
PHR5	Portico	0.33	0.36	0.36	0.38	0.42	0.48	0.53	0.50	0.47	0.46
PHR6	Manzanita Trail	0.08	0.29	0.42	0.47	0.42	0.49	0.52	0.49	0.49	0.43
PHR7	Santa Rosa	0.54	0.48	0.50	0.52	0.61	0.59	0.54	0.51	0.56	0.50
PHR10	Arabella	0.23	0.32	0.42	0.51	0.47	0.45	0.49	0.53	0.46	0.44
PHR19	Watermark					0.04	0.26	0.53	0.64	0.61	0.51
PHR21A	Hampton Lane				0.19	0.33	0.49	0.55	0.54	0.52	0.50
PHR21B	Bridgewater				0.35	0.67	0.68	0.67	0.67	0.64	0.64

EXISTING SPACE ALL SCHOOLS

	Site Acreage	Student Enrollment As of 12/3/2018	Lunch Area	Multipurpose Building/Room (Including Stage Platform)
Skyline	10	506	275-300 students	375 students**
Solana Vista	10	348	325-350 students	200 students
Solana Santa Fe	7	309	175-200 students	257 students**
Solana Highlands	3*	303	300-325 students	320 students**
Carmel Creek	3*	347	250-275 students	320 students**
Solana Pacific	10	525	300-325 students	507 students**
Solana Ranch	10	572	275-300 students	273 students**

* City of San Diego Joint Use for play space and fields – usable 10 acres

** Some Expansion Space available

CORE AND SUPPLEMENTAL INSTRUCTIONAL PROGRAMS

Our Mission is...

to provide a **child-centered education** of the highest **quality**, using the unique vision and resources of home, school, and community to ensure a stable and vibrant learning environment **rigorous** in **academic standards**, **rich in diversity**, **sensitive to individual needs**, and committed to **developing compassionate children** who are **confident**, **competent**, and **creative learners**.

State Requirements:

- Instructional Minutes per grade span and Instructional Days per school year
- PE
- Students meet/exceed state standards (e.g. Literacy, Mathematics, Science, History Social Science)

Discovery Lab

- Art
- PE
- Technology
- Media Center
- Music
- STREAM lab

Question/Considerations:

Do we have the:

- physical space
- staffing

How would the delivery of Discovery Lab Programs and serving students be accomplished while meeting District and Site goals?

2018-19 AVERAGE CLASS SIZES DISTRICTWIDE

School	K-3* 24:1***	4-6* 28:1***
Skyline 4-6		27.8
Skyline Global K-6	20.2	24.0
Solana Vista K-3	19.3	
Solana Santa Fe** K-6	19.0	22.3
Solana Highlands** K-3	18.9	
Carmel Creek** K-3	20.5	
Solana Pacific** 4-6		26.3
Solana Ranch** K-6	18.3	25.5
Districtwide	19.4	25.1

*Includes Special Education Severe and Non-Severe (Data as of 12/2018)

**Available Seats for students generated from new developments

***SBSD Teacher Contract for Student to Teacher Ratios

(24:1 is the State grade level span for K-3; No State mandate for class size in grades 4th-6th)

DISTRICTWIDE ENROLLMENT DECLINE

School	Current K Students 2018-19	Exiting 6 th Grade Students June 2019	Difference
Solana Vista K-3	79		To SKY 6th
Skyline 4-6		110	-31
Skyline Global K-6	26	22	4
Solana Santa Fe K-6	22	52	-30
Solana Highlands K-3	61		To SP 6th
Carmel Creek K-3	79		To SP 6th
Solana Pacific 4-6		177	-37
Solana Ranch	53	104	-51
Districtwide	320	465	-145

**Cohort Projections only; Number of Classrooms per Grade Level depends on Expected Growth/Decline when Projections for 2019-20 are complete and/or Neighboring Grade Level # of Students*

DISTRICTWIDE 3RD GRADERS TO 4TH*

School	Current 3 rd # of Students	Current 3 rd Teachers 20:1	To 4 th Feeder Teachers 27:1	Difference FTE from 2018-19 to 2019-20
Solana Vista	101	5	3.7/4.0	-1
Solana Santa Fe	50	3	1.9/2.0	-1
Solana Highlands	81	4	3.0/3.0	-1
Carmel Creek	85	4	3.1/3.0	-1
Solana Ranch	92	5	3.4/3.5	-1.5
Districtwide	409	21.0	15.1/15.5	-5.5

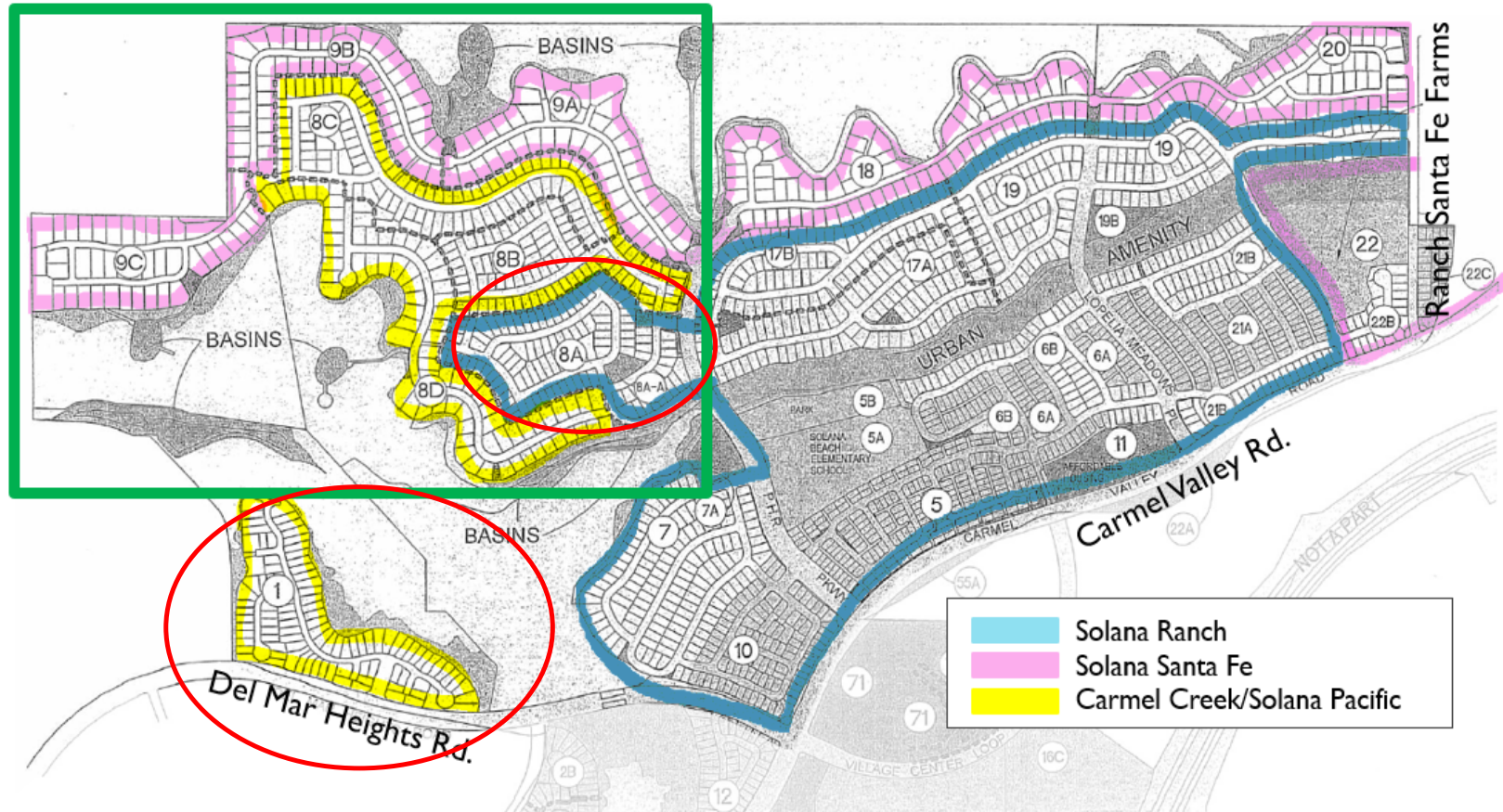
**Cohort Projections only; Number of Classrooms per Grade Level depends on Expected Growth/Decline when Projections for 2019-20 are complete and/or Neighboring Grade Level # of Students*

Utilize Existing School Facilities

**Solana Santa Fe:
9A, 9B, 9C**

**Solana Ranch:
8A**

**Carmel Creek/Solana Pacific:
1, 8B, 8C, 8D**



SENDERO #8A:

	2018-2019	2019-2020	2020-2021
Sendero 8A # Units	16	61	35
Generation Rate	.5/.6	.5/.6	.5/.6
# Students	8/9.6	30.5/36.6	17.5/21
Cumulative	8/9.6	38.5/46.2	56/67.2

PROJECTIONS - METHODOLOGY

Annual Cohort Analysis

Includes Residential Development numbers
Mobility Rates by School 2nd – 6th Grade
Grade Level Cohort variance

State Wide Birth Rate

Does not apply to Solana Beach School District

STUDENT MOBILITY 2018-19

Student First Enrolled							Students No Longer Enrolled							
Year: 2018							Year: 2018							
School Name	1	2	3	4	5	6	School Name	K	1	2	3	4	5	
Carmel Creek	16	18	12	0	0	0	Carmel Creek	7	14	9	7	0	0	
Skyline	0	1	1	11	8	4	Skyline	1	1	3	2	3	6	
Solana Highlands	14	17	10	0	0	0	Solana Highlands	10	7	8	13	0	0	
Solana Pacific	0	0	0	29	31	20	Solana Pacific	0	0	0	0	13	22	
Solana Ranch	12	4	12	13	14	14	Solana Ranch	4	6	8	4	10	5	
Solana Santa Fe	5	5	5	9	9	10	Solana Santa Fe	5	3	3	2	9	5	
Solana Vista	13	7	5	0	0	0	Solana Vista	10	10	4	7	0	0	
Totals:	52	45	62	62	48	269								
													184	
													Diff	85
													New Res	-38
													Net MiMo	47

STUDENT MOBILITY 2017-18

Student First Enrolled							Students No Longer Enrolled									
Year: 2017							Year: 2017									
School Name	K	1	2	3	4	5	6	School Name	K	1	2	3	4	5		
Carmel Creek	17	14	13	0	0	0	0	Carmel Creek	13	8	11	13	0	0		
Skyline	0	0	0	10	12	12		Skyline	3	1	2	1	12	16		
Solana Highlands	14	9	14	0	0	0		Solana Highlands	6	16	14	14	0	0		
Solana Pacific	0	0	0	14	16	28		Solana Pacific	0	0	0	0	13	34		
Solana Ranch	5	5	7	2	9	2		Solana Ranch	2	6	5	3	3	1		
Solana Santa Fe	7	5	6	5	5	2		Solana Santa Fe	3	1	4	5	5	4		
Solana Vista	10	7	10	0	0	0		Solana Vista	4	6	10	0	0			
Totals:	53	40	50	31	42	44	207							212		
															Diff	-5
															New Res	-19
															Net MiMo	-24



2019-2020 PRELIMINARY PROJECTIONS

Solana Ranch Conservative:

Solana Ranch

Grade	2015	2016	2017	2018	2019	2020	2021	2022	2023	2024	2025	2026	2027	2028
K	77	58	76	53	62	68	71	71	70	69	68	67	66	65
1	78	88	64	84	61	69	73	74	74	73	72	70	69	68
2	68	81	87	63	89	65	71	73	74	74	73	72	70	69
3	89	78	84	92	68	94	67	71	73	74	74	73	72	70
4	61	89	76	95	97	74	96	70	74	76	77	77	76	74
5	71	73	94	81	100	102	76	96	70	74	76	77	77	76
6	84	82	74	103	85	104	104	76	96	70	74	76	77	77
Subtotals:	528	549	555	571	562	576	558	531	531	510	514	512	507	499
Pct Chg:	0%	4%	1.1%	2.9%	-1.6%	2.5%	-3.1%	-4.8%	0%	-4%	0.8%	-0.4%	-1%	-1.6%
SDC:	1	1	2	1	1	1	1	1	1	1	1	1	1	1
Totals:	529	550	557	572	563	577	559	532	532	511	515	513	508	500

2019-2020 PRELIMINARY PROJECTIONS

Solana Ranch Moderate:

Solana Ranch

Grade	2015	2016	2017	2018	2019	2020	2021	2022	2023	2024	2025	2026	2027	2028
K	77	58	76	53	68	73	76	76	75	75	74	73	73	72
1	78	88	64	84	64	72	76	78	78	78	77	76	76	75
2	68	81	87	63	93	67	73	76	78	78	78	77	76	76
3	89	78	84	92	72	96	68	73	76	78	78	78	77	76
4	61	89	76	95	101	75	96	70	76	79	81	81	80	80
5	71	73	94	81	103	104	76	96	70	76	79	81	81	80
6	84	82	74	103	88	105	104	76	96	70	76	79	81	81
Subtotals:	528	549	555	571	589	592	569	545	549	534	543	545	544	540
Pct Chg:	0%	4%	1.1%	2.9%	3.2%	0.5%	-3.9%	-4.2%	0.7%	-2.7%	1.7%	0.4%	-0.2%	-0.7%
SDC:	1	1	2	1	1	1	1	1	1	1	1	1	1	1
Totals:	529	550	557	572	590	593	570	546	550	535	544	546	545	541

OTHER OPTIONS / CONSIDERATIONS:

Continue to Explore:

- Converting Solana Highlands to a K-6

Based on Long-Term Housing Decision:

- Determine the attendance area for One Paseo

NEXT STEP:

Options with Various Impacts:

1. Assignment of PHR Neighborhood #8A Sendero
2. Assignment of PHR Neighborhood #20 Artesana to Solana Ranch
3. Assignment of PHR Neighborhood #1 Santa Barbara with Grandfather Clause to Carmel Creek (K-3) and Solana Pacific (4-6)

DISCUSSION AND QUESTIONS

